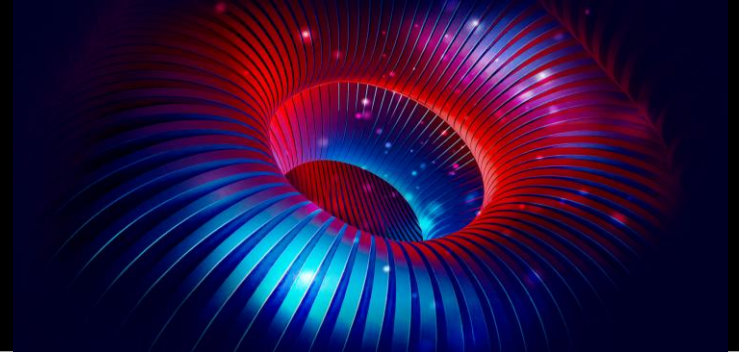




CIV
WORLD
CHALLENGES & INNOVATIONS IN VASCULAR WORLD

31 MARS
1^{ER} AVRIL **2026**

MÉRIDIEN ÉTOILE
PARIS



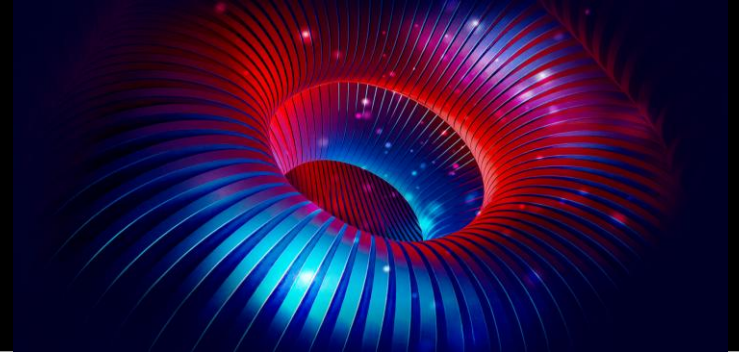
Accès jambiers rétrogrades : toutes mes astuces

Lorenzo Patrone

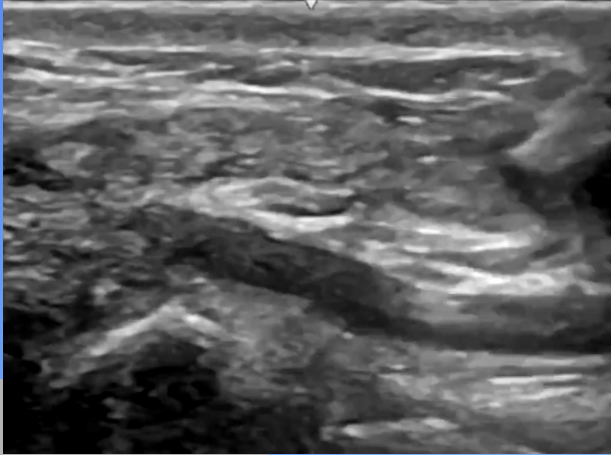
Consultant Interventional Radiologist



Conflits et liens d'intérêts



Consultant for: Abbott, Angiodroid, Asahi, Bentley, COOK, Philips, Shockwave, Terumo, Teleflex



RT

B TAMI

ANTEGRADE A

C

D

E

F CONTROLATERAL

RETROGRADE G



LEFT

LAO 30



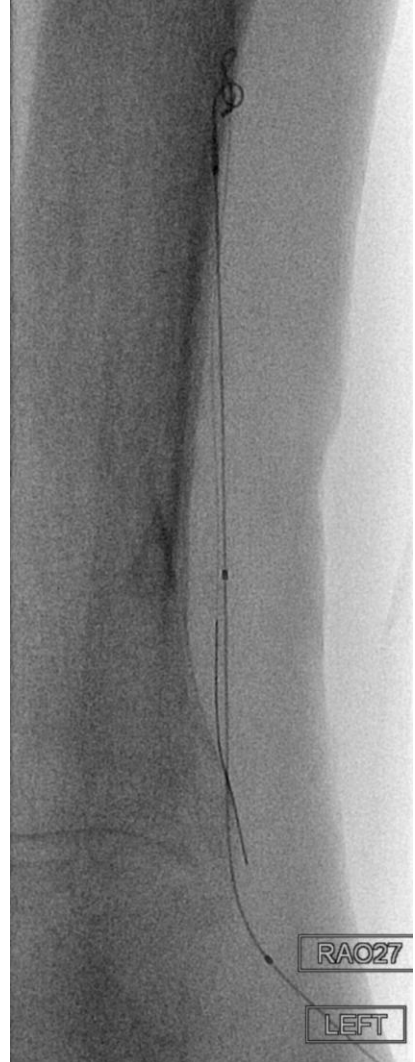
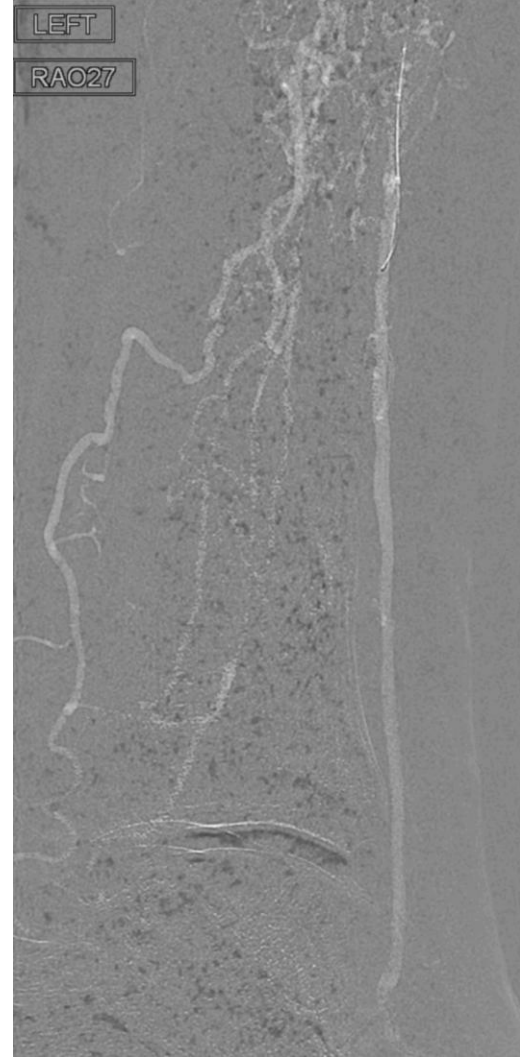
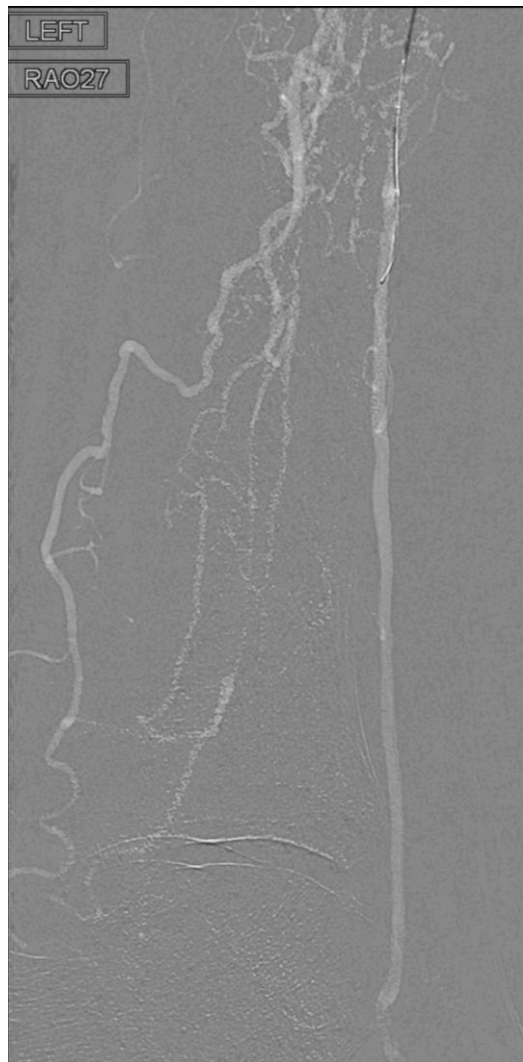
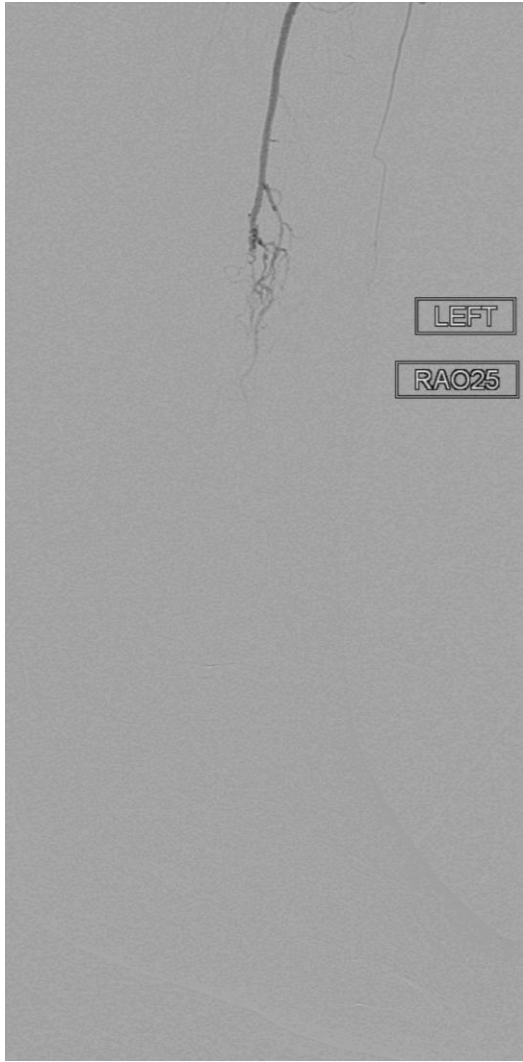
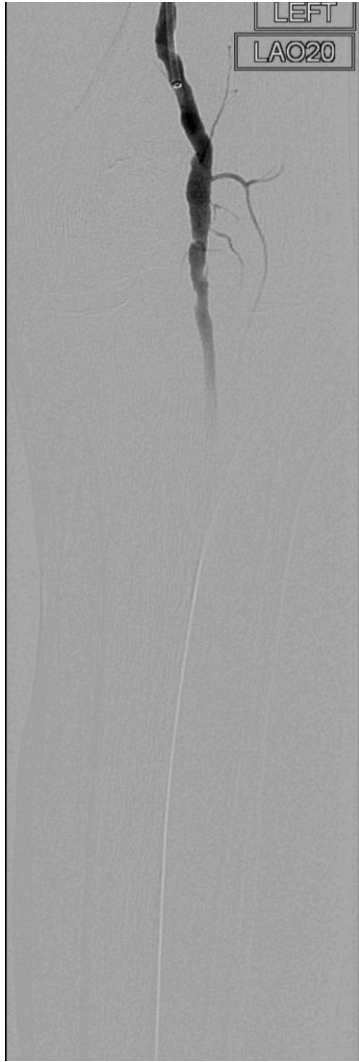
RT

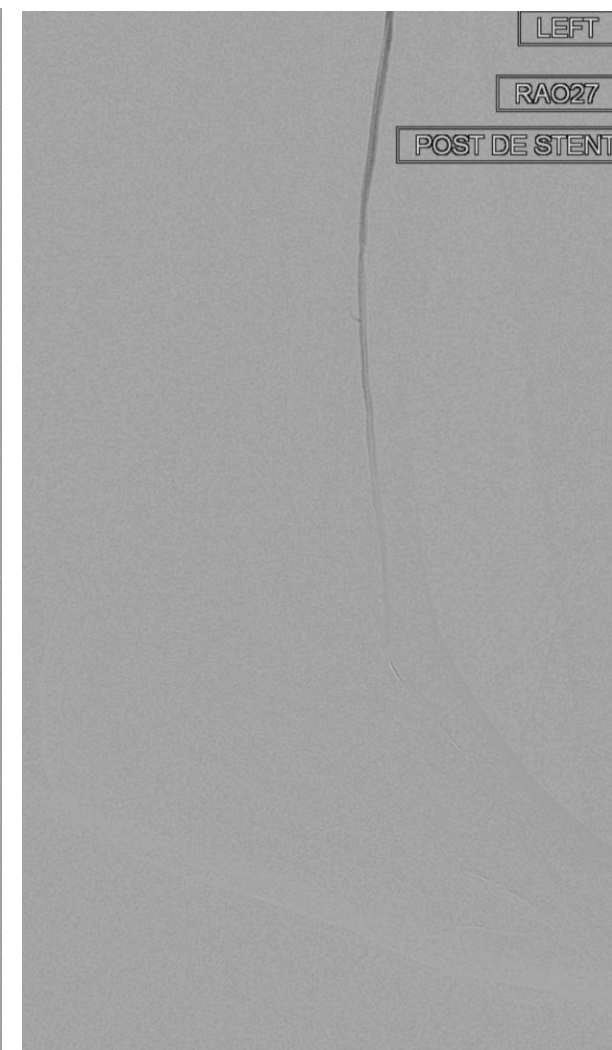
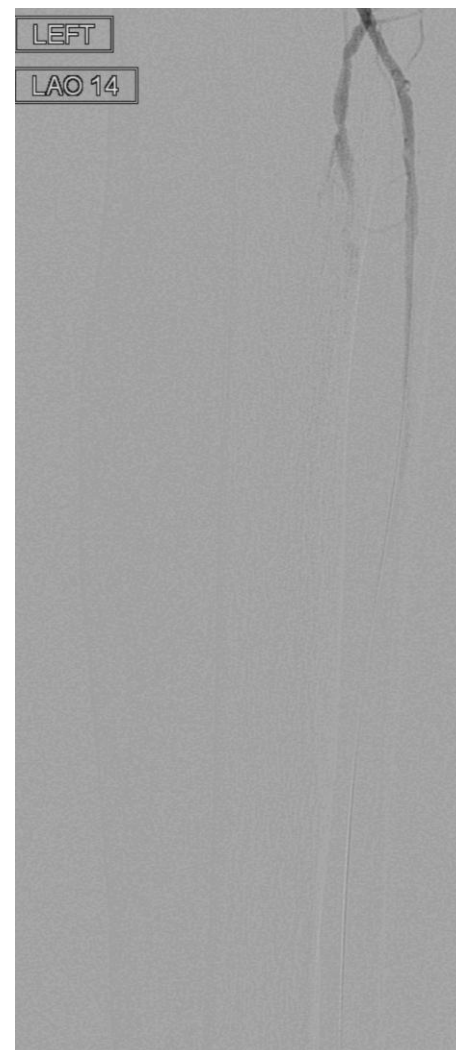
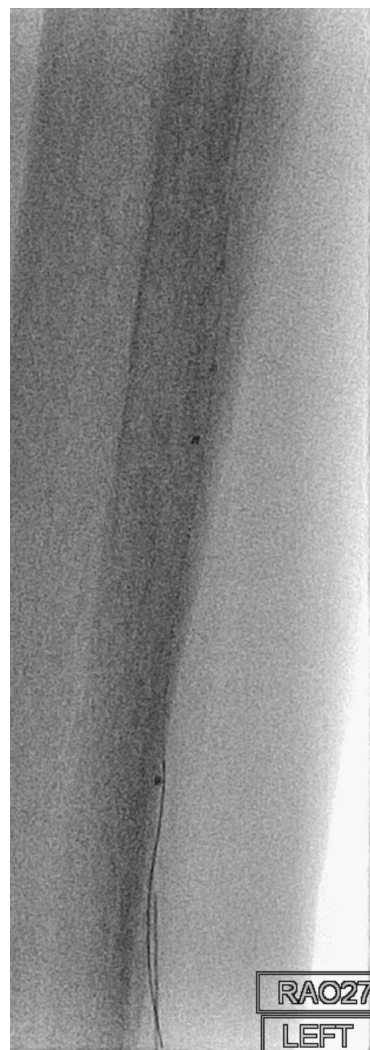
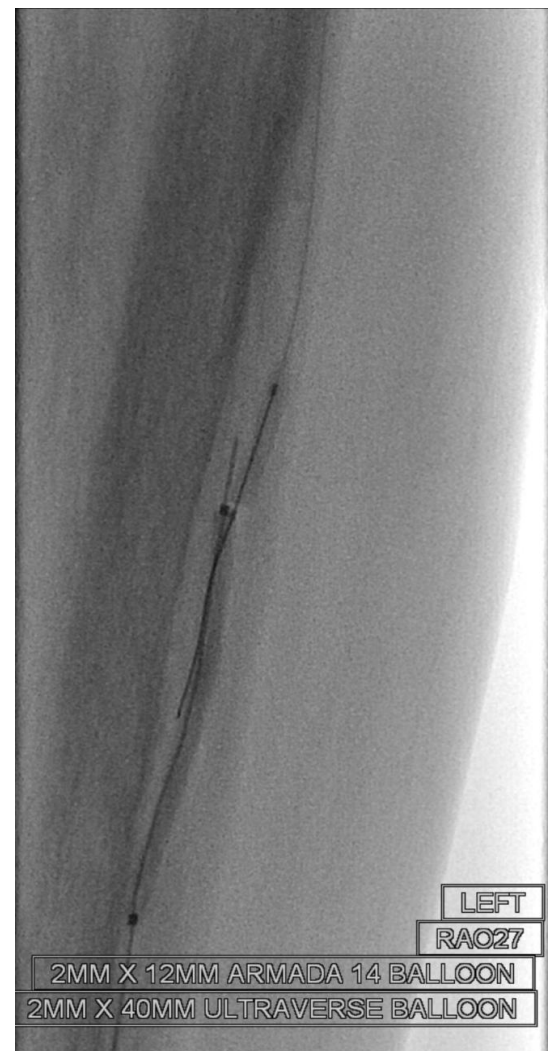
LAO 22





MAKE GOOD CHOICES!



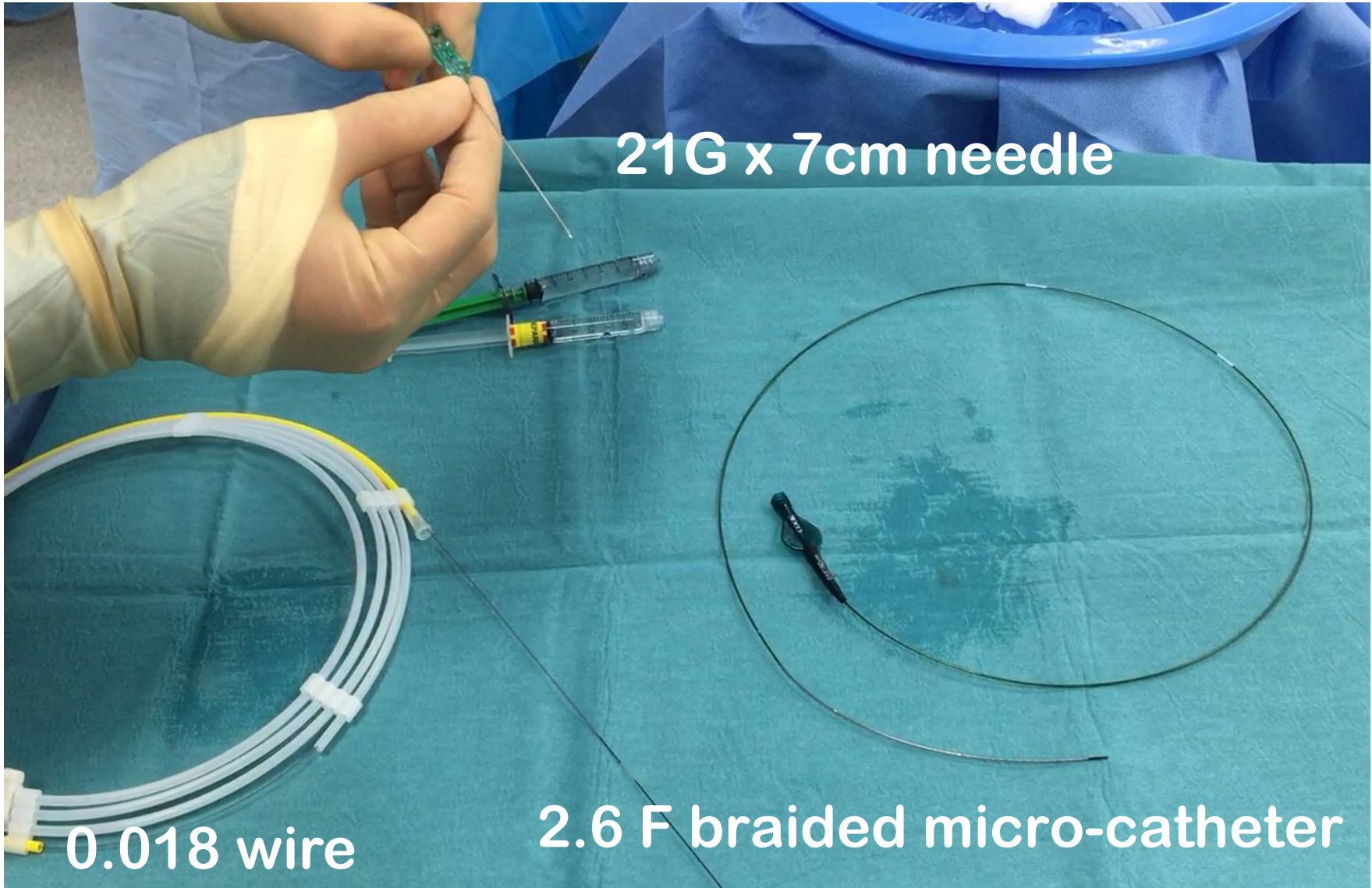






HOW DO YOU DO THAT?

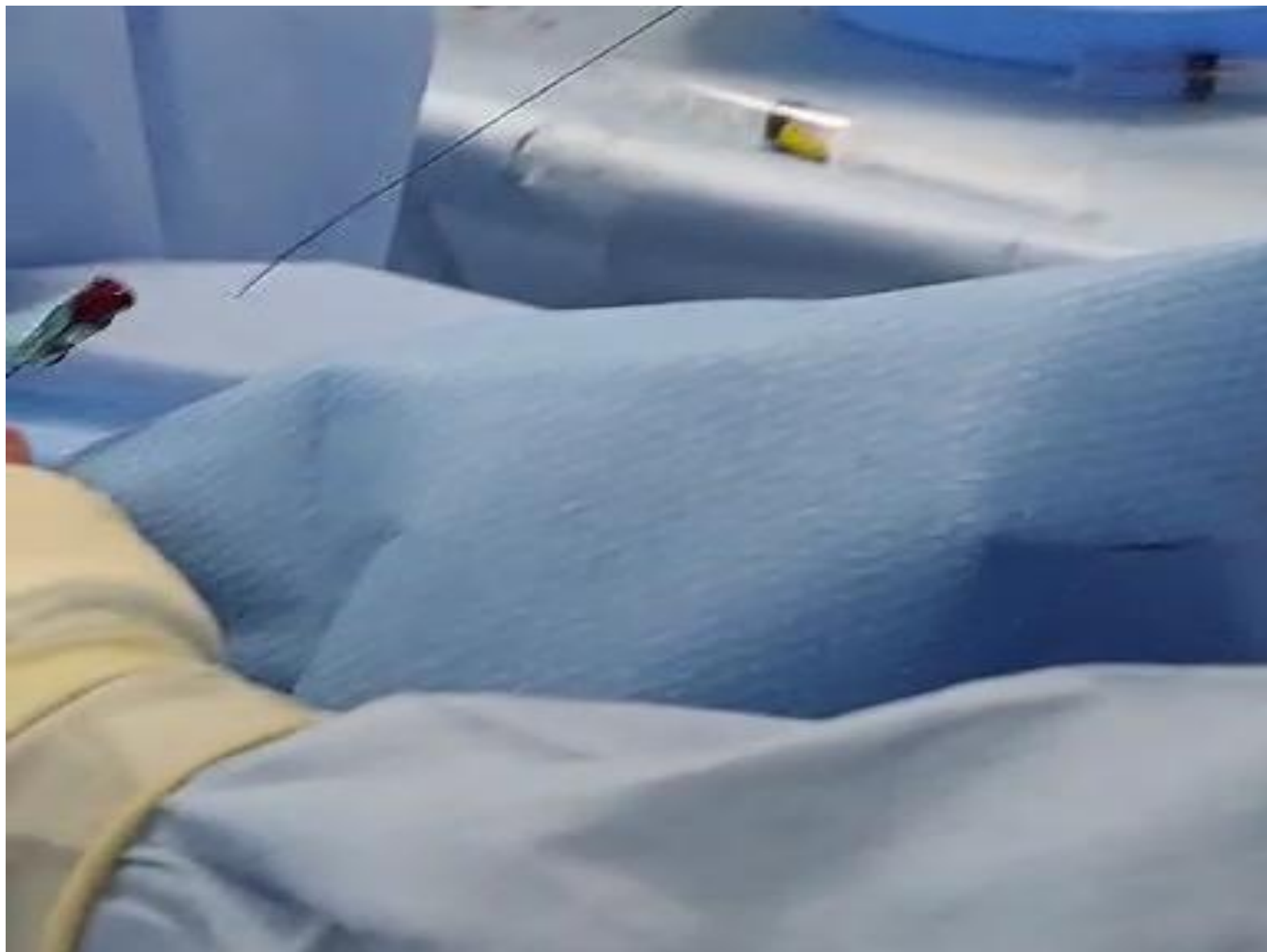
NETFLIX



21G x 7cm needle

0.018 wire

2.6 F braided micro-catheter



ULTRASOUND GUIDED

PORTABLE US MACHINE

Vascular

SAMSUNG NPH

TIs 0.2 MI 1.4

04-12-2020

12:36:26

Venous
LA3-16AD
4.5cm
43Hz

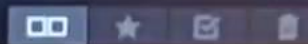
[2D]
Res
Gn 94
DR 104
FA 7
P 90%



Show Clip [X] [X]
Show Clip [X] [X] Set [X] [X] Show Img [X] [X]

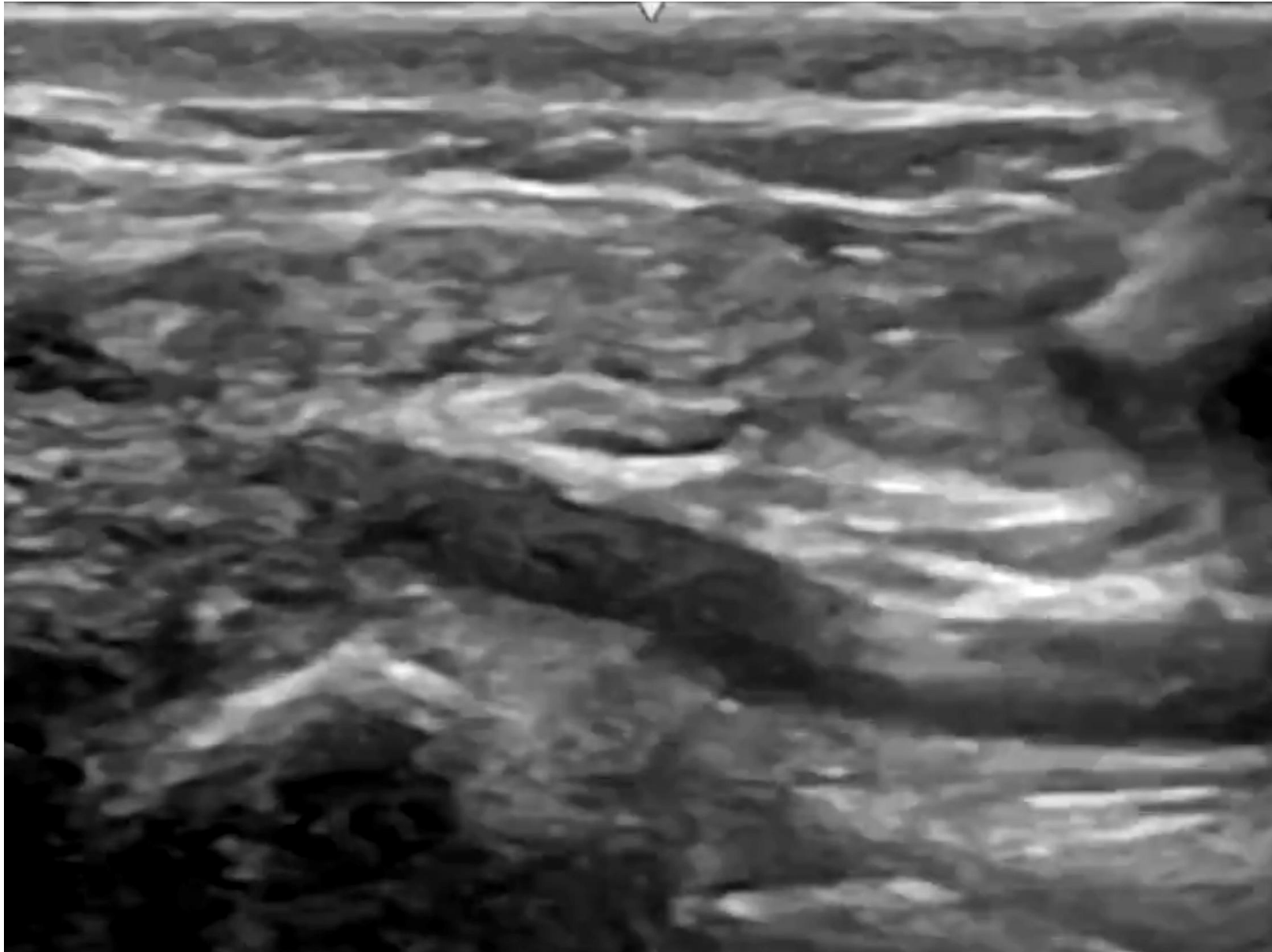


CAP

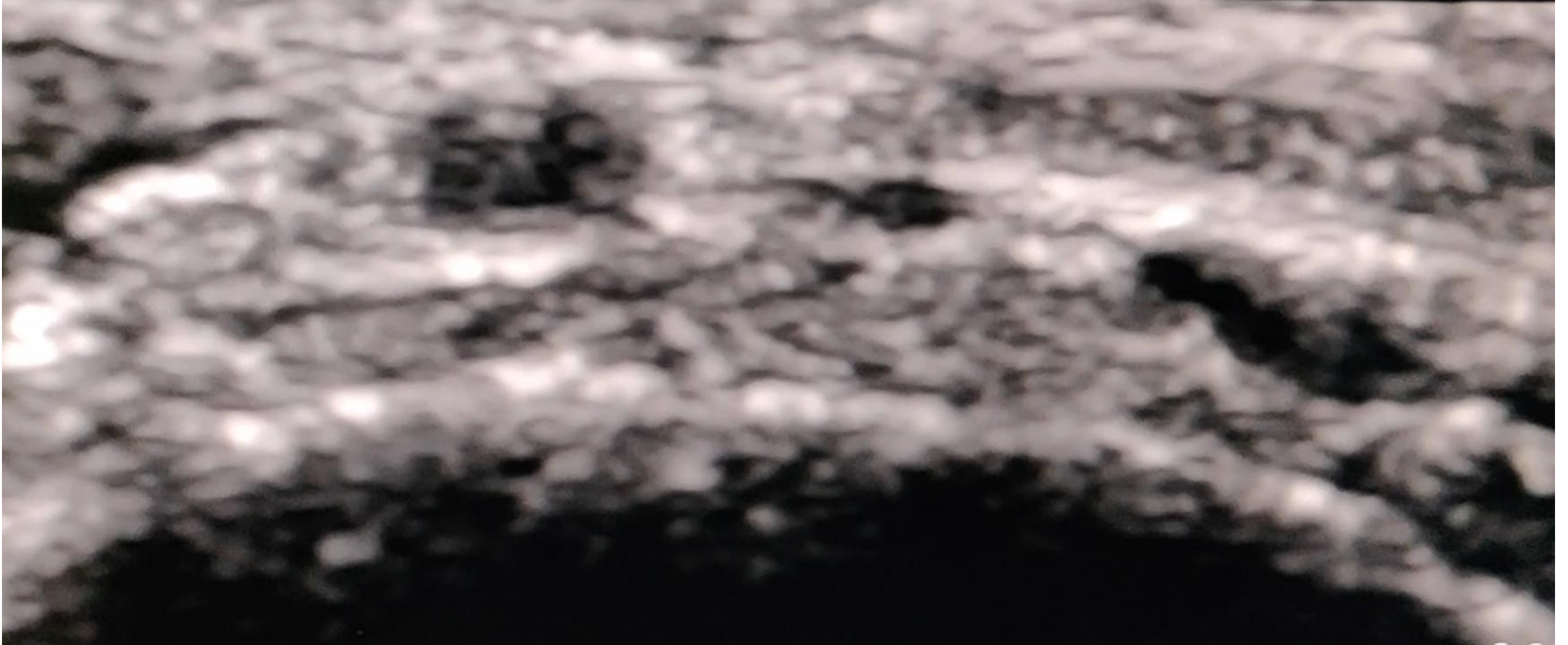


Images: 0

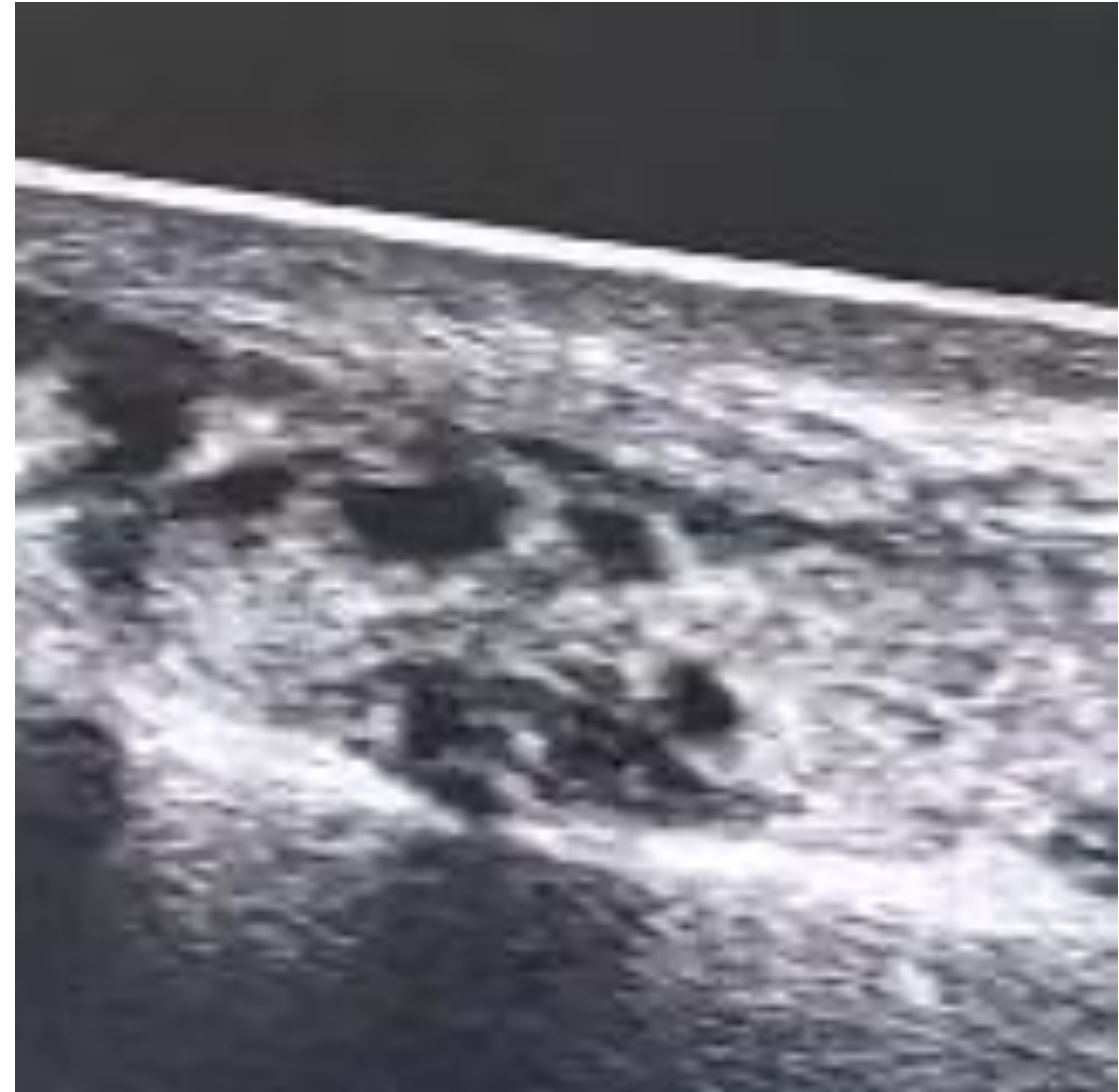
LONGITUDINAL PUNCTURE IS COOL...

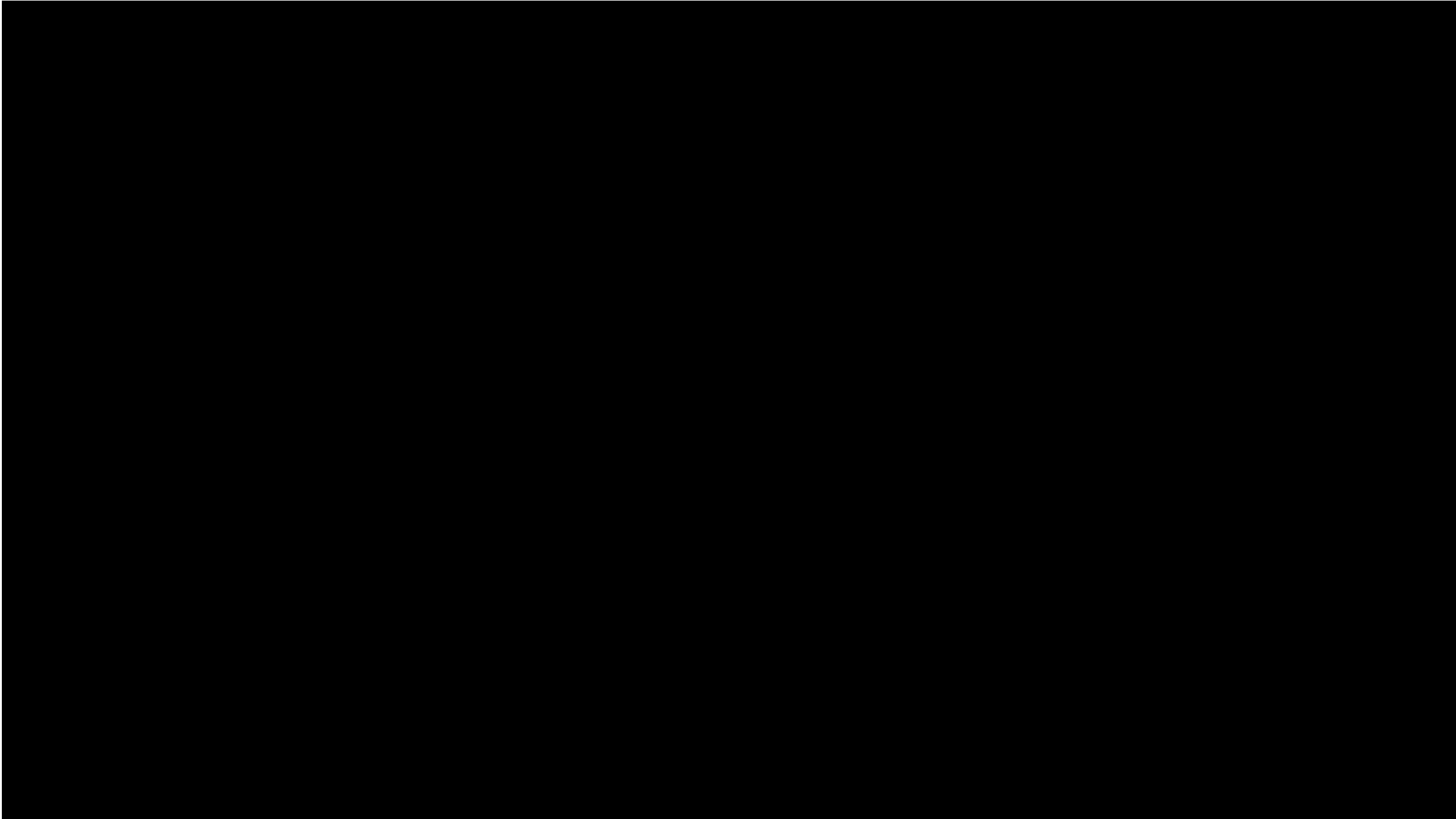


... BUT BE USED TO PUNCTURE ON AXIAL VIEW



... BUT BE USED TO PUNCTURE ON AXIAL VIEW





**FLUOROSCOPICALLY
GUIDED**

Multicenter Study

> [J Vasc Surg.](#) 2018 Dec;68(6):1824-1832. doi: 10.1016/j.jvs.2018.05.231.

Epub 2018 Aug 17.

Anterolateral retrograde access to the distal popliteal artery and to the tibioperoneal trunk for recanalization of femoropopliteal chronic total occlusions

[Michele Silvestro](#)¹, [Luis Mariano Palena](#)², [Marco Manzi](#)², [Efrem Gómez-Jabalera](#)², [Deepak Vishwanath](#)², [Andrea Casini](#)³, [Roberto Ferraresi](#)³

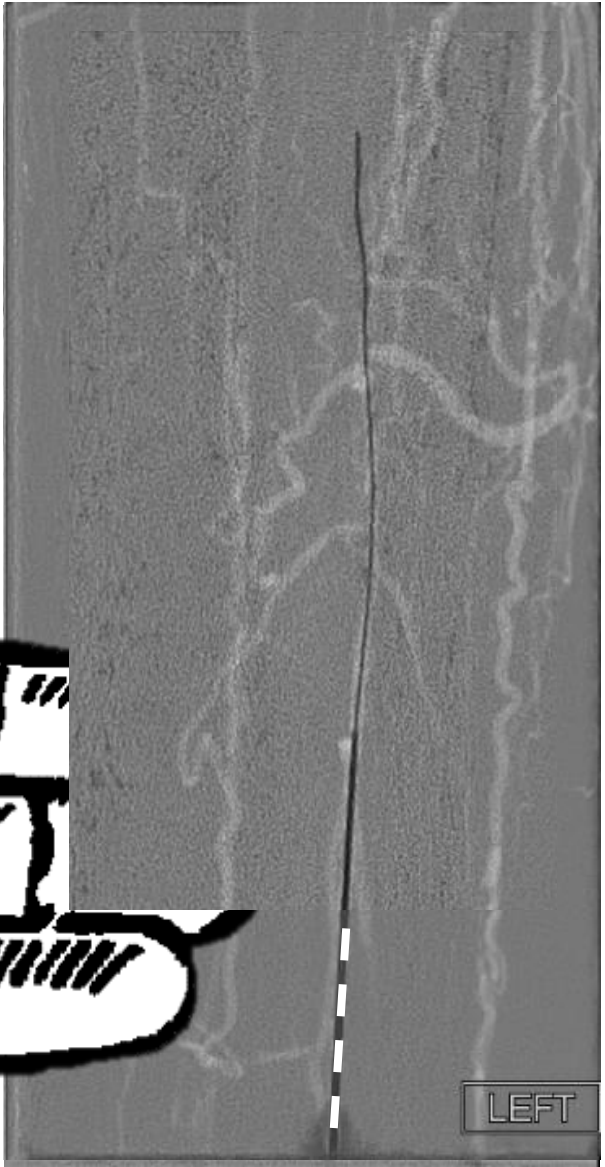
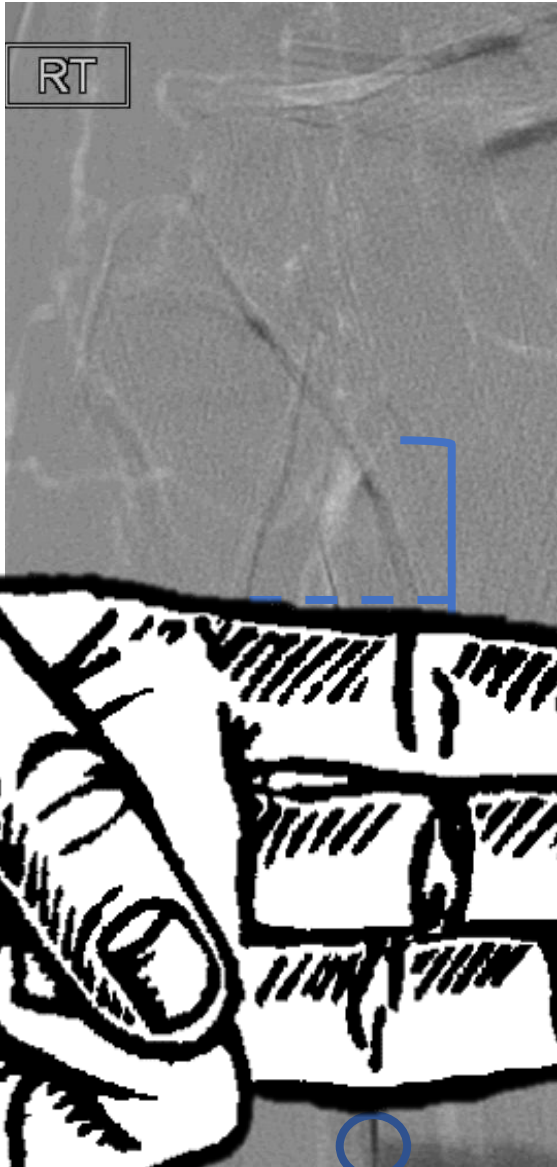
> [J Clin Med.](#) 2024 May 8;13(10):2770. doi: 10.3390/jcm13102770.

Retrograde Peroneal Artery Approach to Treat Infra-inguinal Arterial Chronic Total Occlusions: A Multicentre Experience and Technical Considerations

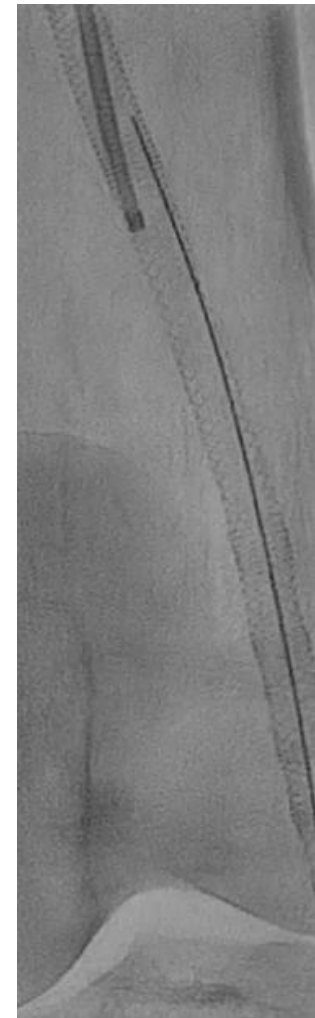
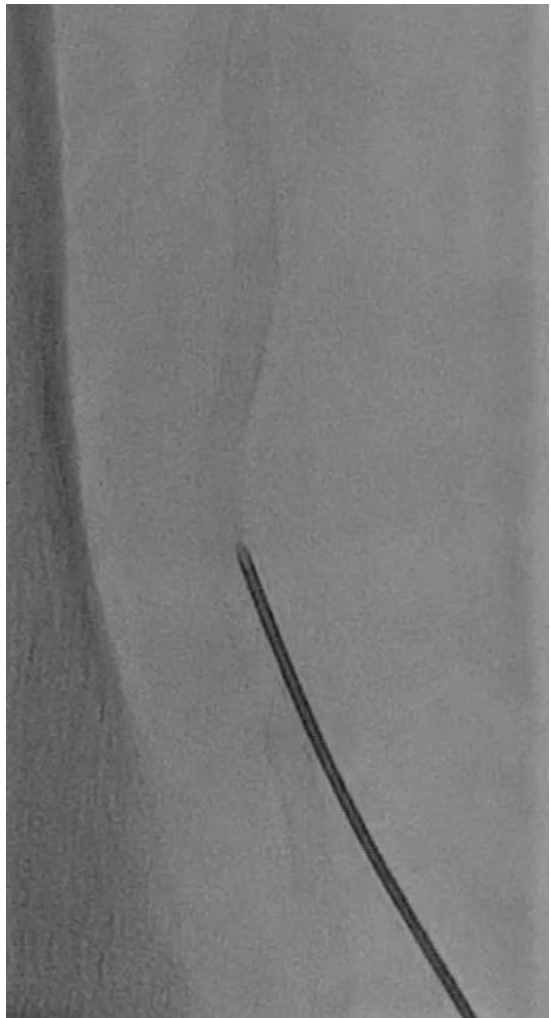
[Lorenzo Patrone](#)¹, [Gianmarco Falcone](#)², [Raphael Coscas](#)³, [Hady Lichaa](#)⁴, [Muliadi Antaredja](#)⁵, [Fabrizio Fanelli](#)², [Erwin Blessing](#)⁵

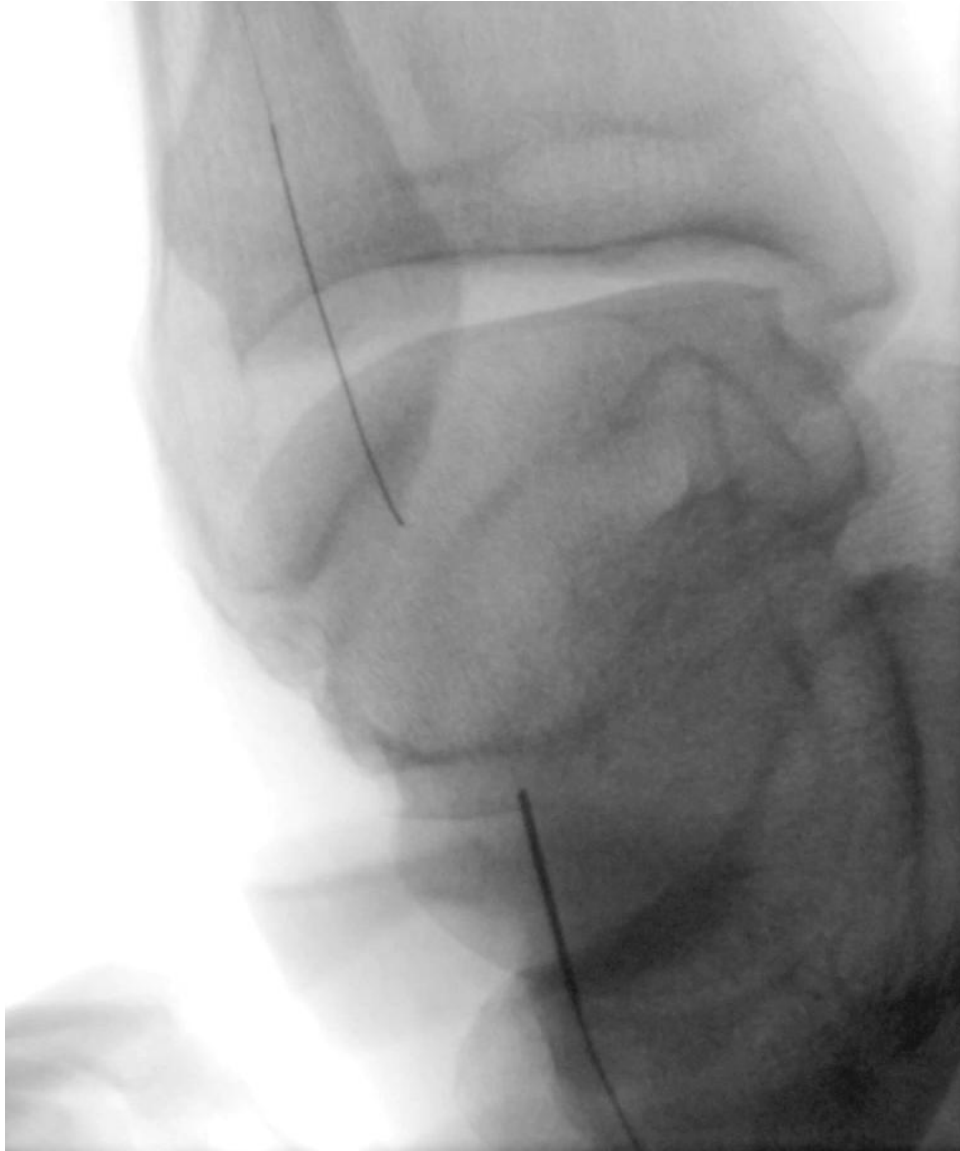
**- SKIN ACCESS
THREE FINGERS
BELOW YOUR
TARGET**

**- MAIN
NEEDLE
ON T
VES
(ANGLE)**

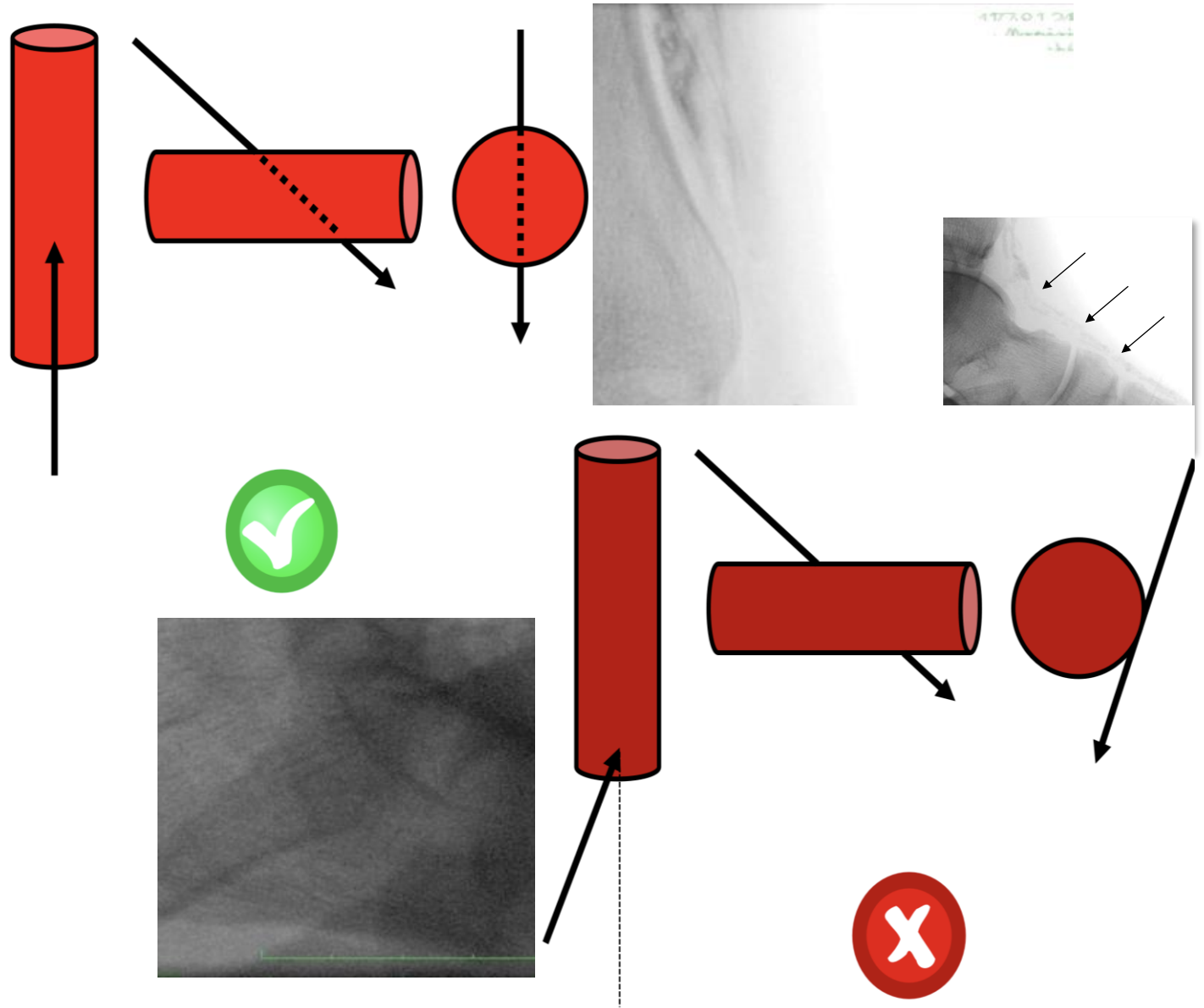


PUNCTURE TRICKS UNDER FLUOROSCOPIC GUIDANCE





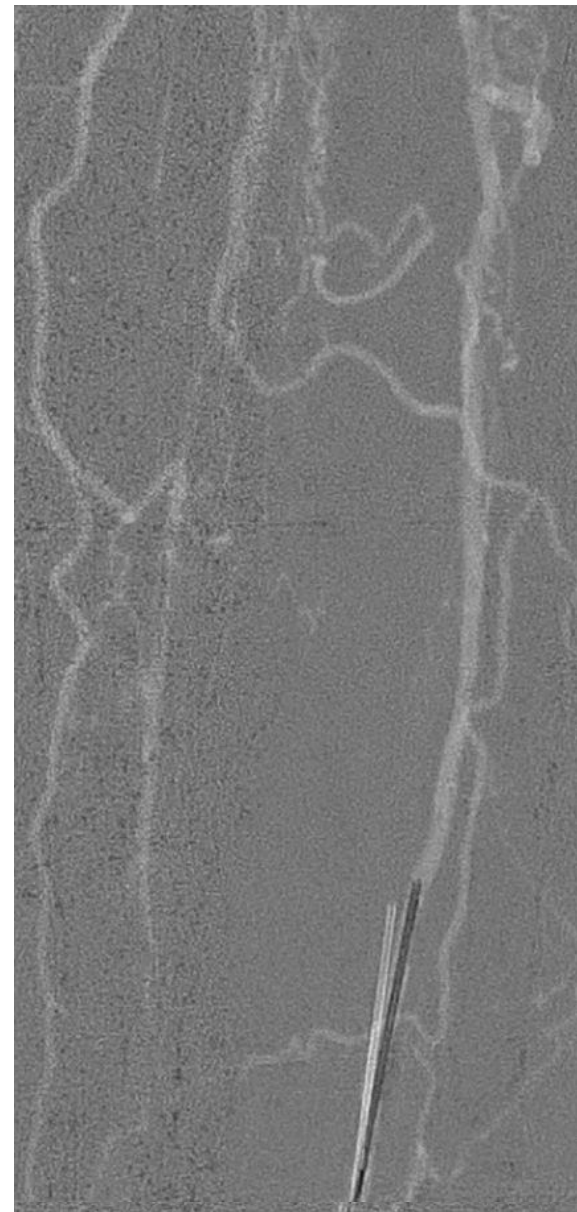
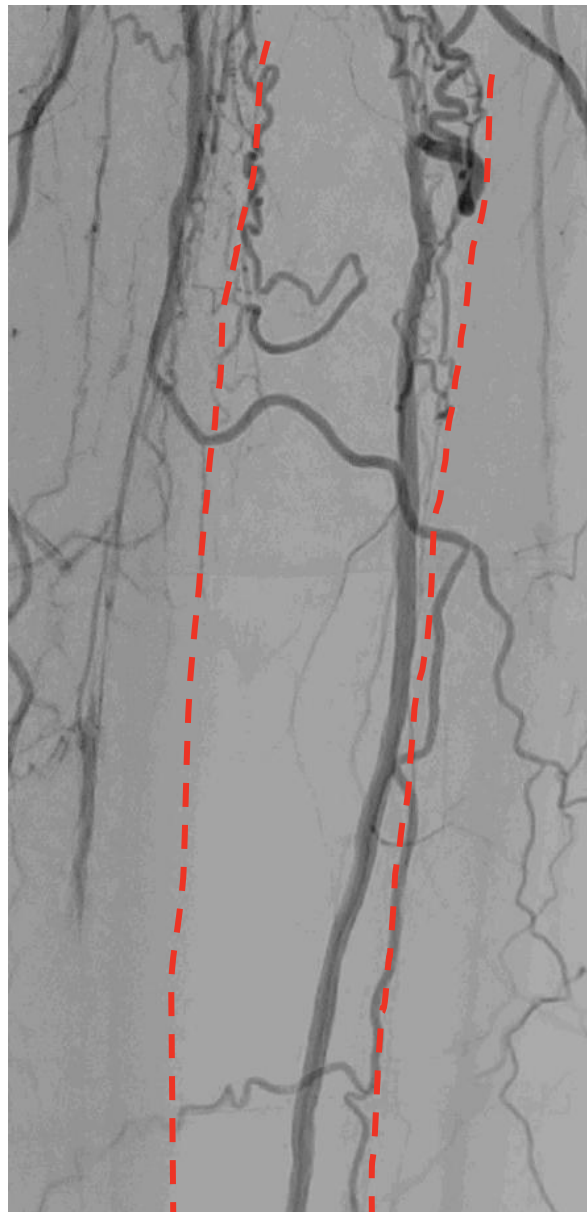
DP ARTERY (AP puncture)

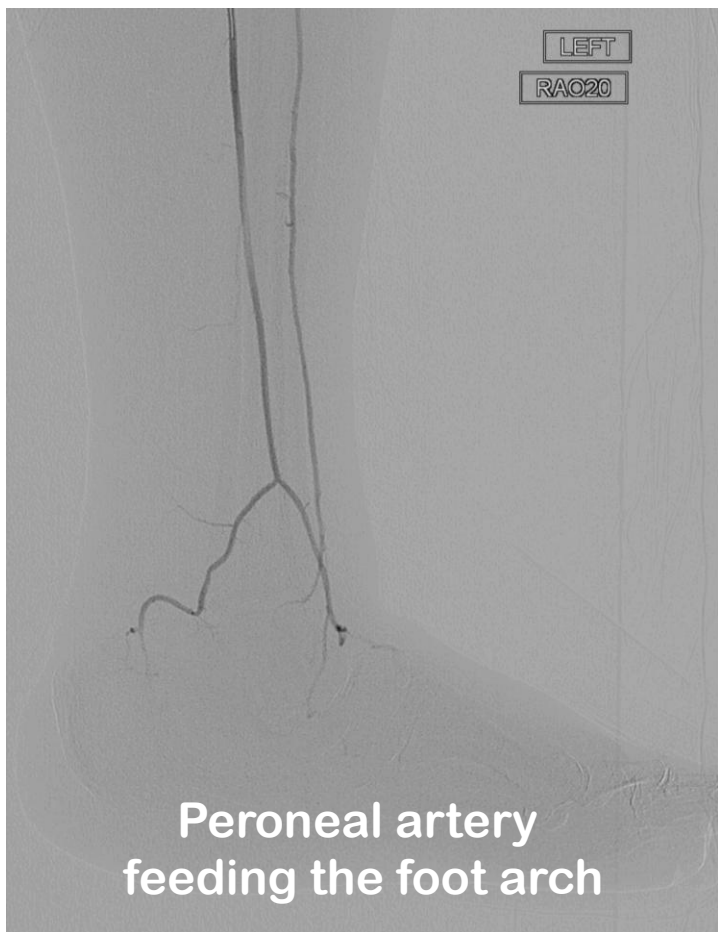
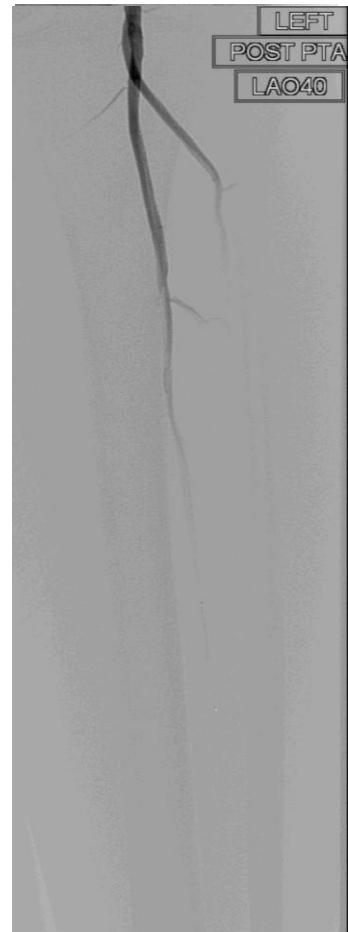


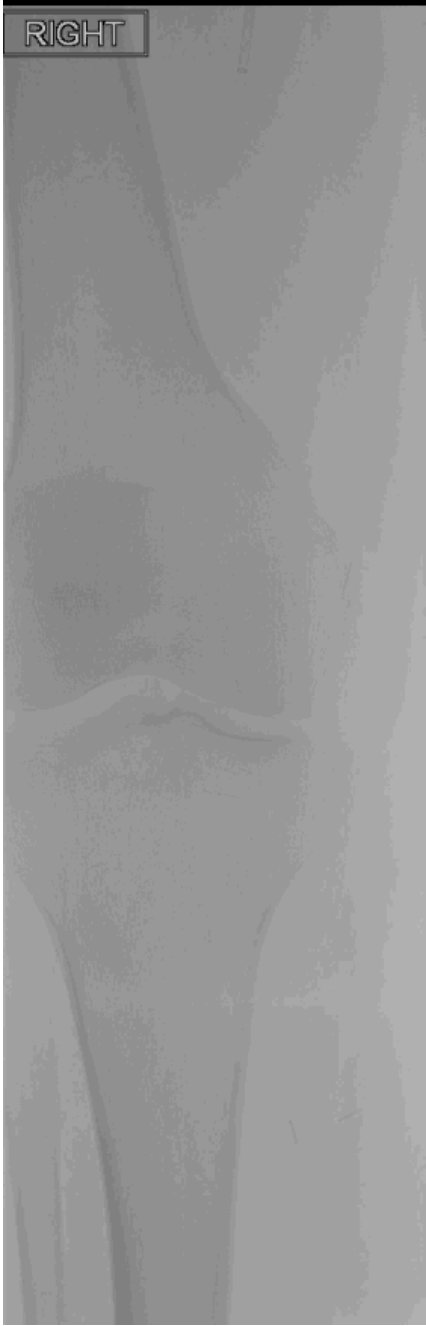


MENTALITY

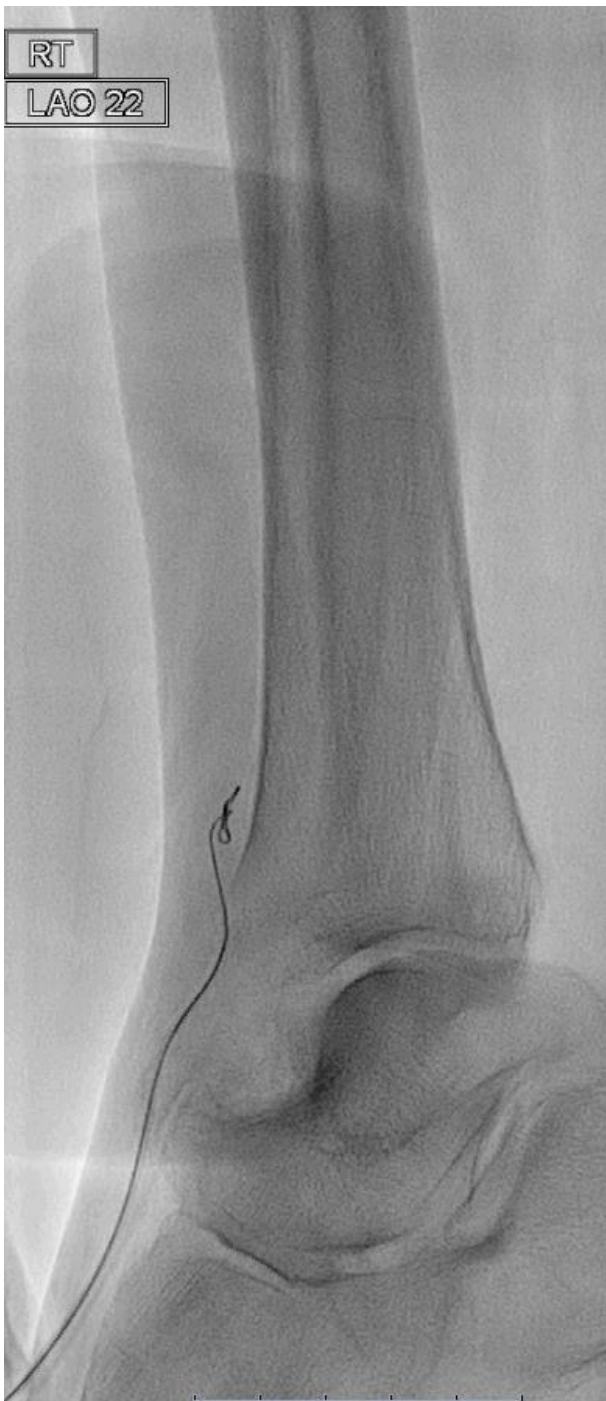
The image features the word "MENTALITY" in a bold, blue, sans-serif font. The letters are arranged horizontally across the center. Behind the text, there is a stylized illustration of a human head in profile, facing left. The head is rendered in a light gray color. Inside the head, there is a black silhouette of a brain. Above the brain, a large, semi-circular area is filled with a pattern of small, gray question marks and symbols, suggesting a state of questioning or mental activity. To the right of the head, there is a large, gray, curved shape that resembles a leaf or a petal, partially overlapping the head and the text.



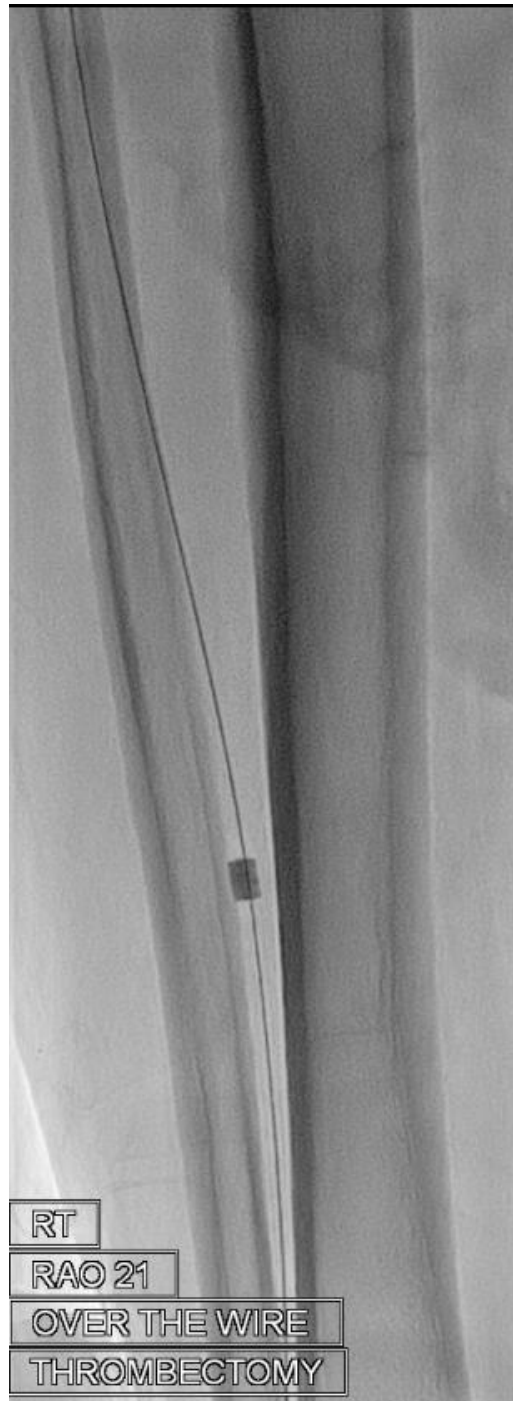




RT
LAO 22



RT
RAO 21
OVER THE WIRE
THROMBECTOMY



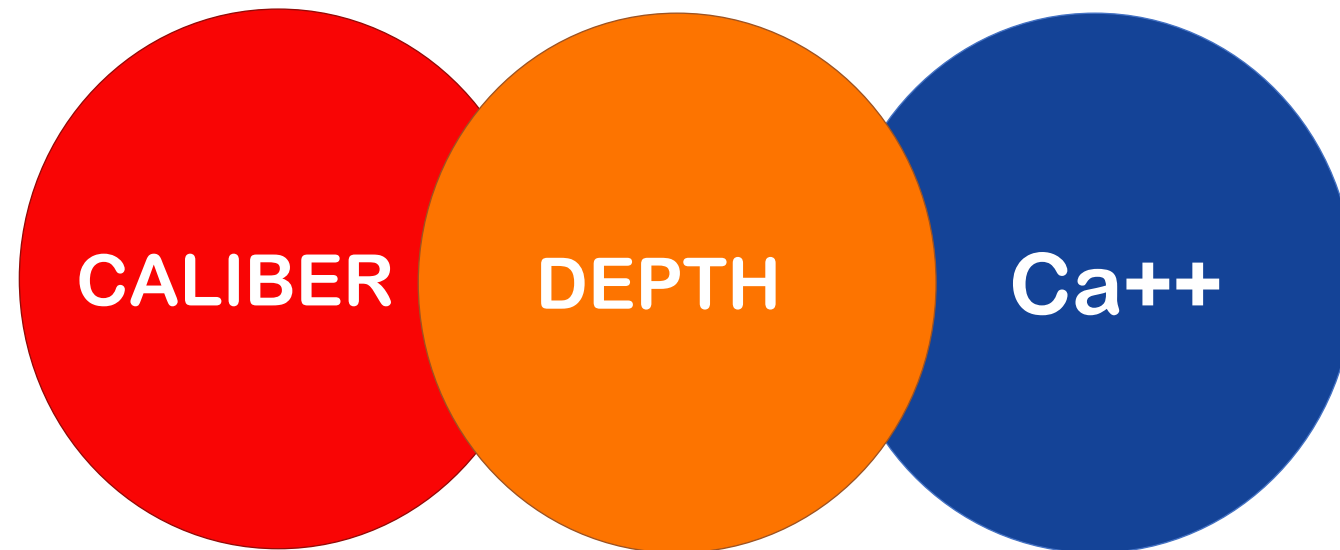
RT
LAO 22





BTA punctures

MOST IMPORTANT FACTORS TO TAKE INTO ACCOUNT



Special Issue Calls for Papers

Find a home for your research >>

Sage Journals

Search this journal ▾

Enter search terms...



[Advanced search](#)

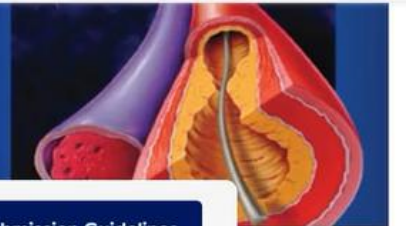
 Access/Profile

 Cart

Browse by discipline ▾

Information for ▾

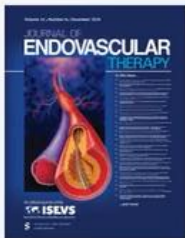
Journal of Endovascular Therapy



Impact Factor: 1.5 / 5-Year Impact Factor: 2.2

[Journal Homepage](#)

[Submission Guidelines](#)



The Journal of Endovascular Therapy (formerly the Journal of Endovascular Surgery) was established in 1994 as a forum for all physicians, scientists, and allied healthcare professionals who are engaged or interested in peripheral endovascular techniques and ... | [View full journal description](#)
This journal is a member of the [Committee on Publication Ethics \(COPE\)](#).

Browse journal

[Current issue](#)

[OnlineFirst](#)

[All issues](#)

[Free sample](#)

Browse by

[Most recent](#)

[Most read](#)

[Most cited](#)

[Trending](#)

[Collections](#)

Journal information

[Journal overview and metrics](#)

[Editorial board](#)

[Submission guidelines](#)

Most read articles in this journal in the last 6 months.



CONCLUSIONS



CONCLUSIONS



CONCLUSIONS



MAY THE **PROBE**
BE WITH YOU

THANK YOU FOR YOUR ATTENTION

